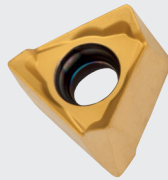


TRUE 90° SHOULDER MILLING



Purchase 10
inserts per
pocket, receive
a FREE cutter
body*

TNGX 160608SR-M M8330 Inserts



M8330 is a versatile
multi-application grade

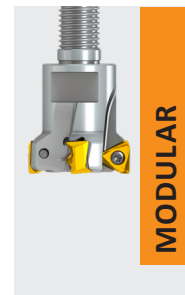
- High positive geometry with medium T-land.
- Particularly suited to light and medium machining.

M

ISTN16 Cutter

Applications of the ECON TN16

- Higher number of teeth
- Differential pitch available
- Through coolant
- Precision machined pocket
- Coarse-tooth & fine-tooth options
- Heavy duty insert mounting screw



* Milling cutters must be compatible to the inserts purchased to receive this promotion.

Insert TNGX 160608SR-M:M8330 only

Please use promo code **TN16PRO** when ordering
Promotion valid from October 15 to November 15, 2022.

NO EDI ORDERS

www.dgisupply.ca

1-800-923-6255

Dormer Pramet Authorized Distributor

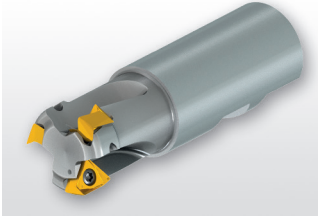


DORMER PRAMET

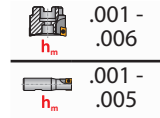
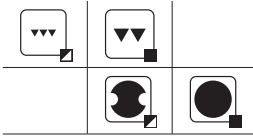
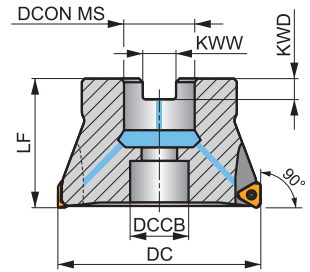
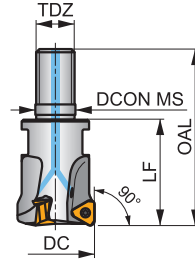
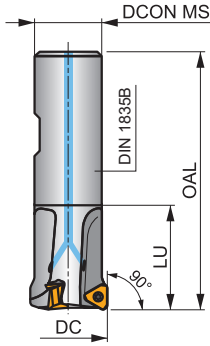
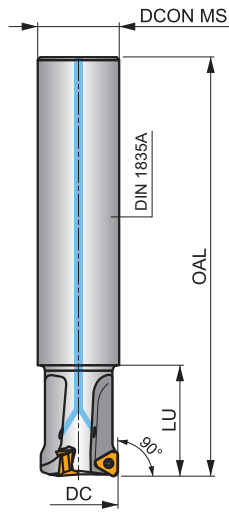
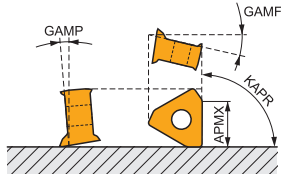
ISTN16



S



KAPR	90°
------	-----



Product	DC	OAL	DCON MS	DBC1	LU	LF	TDZ	KWW	KWD	GAMF	GAMP								MID#	
	[inch]	[inch]	[inch]	[inch]	[inch]	[inch]	[°]	[inch]	[inch]	[°]	[°]									
	PRE8052333	1.000	6.693	1.000	-	1.339	-	-	-	-18.5	-9.5	2	-	✓	0.54	G1340	IC0334	8052333		
	PRE8021685	1.250	7.677	1.250	-	1.339	-	-	-	-16	-9.5	2	-	✓	1.03	G1340	IC0334	8021685		
	PRE8021687	1.250	7.677	1.250	-	1.339	-	-	-	-16	-9.5	3	-	✓	1.02	G1340	IC0334	8021687		
	PRE8021686	1.250	7.677	1.250	-	3.15	-	-	-	-16	-9.5	2	-	✓	0.94	G1340	IC0334	8021686		
	PRE8052334	1.000	3.937	1.000	-	1.654	-	-	-	-18.5	-9.5	2	-	✓	0.30	G1340	IC0334	8052334		
	PRE8021689	1.250	4.331	1.250	-	1.654	-	-	-	-16	-9.5	3	-	✓	0.51	G1340	IC0334	8021689		
	PRE8021720	1.500	4.724	1.250	-	1.969	-	-	-	-16	-9.5	4	-	✓	0.62	G1340	IC0334	8021720		
	PRE8052338	1.000	2.165	0.492	-	-	1.299	M12	-	-16	-9.5	2	-	✓	0.08	G1340	IC0334	8052338		
	PRE8021721	1.250	2.598	0.669	-	-	1.693	M16	-	-16	-9.5	2	-	✓	0.17	G1340	IC0334	8021721		
	PRE8021722	1.250	2.598	0.669	-	-	1.693	M16	-	-16	-9.5	3	-	✓	0.17	G1340	IC0334	8021722		
	PRE8021723	1.500	2.598	0.669	-	-	1.693	M16	-	-16	-9.5	3	-	✓	0.19	G1340	IC0334	8021723		
	PRE8021724	1.500	2.598	0.669	-	-	1.693	M16	-	-16	-9.5	4	-	✓	0.19	G1340	IC0334	8021724		
	PRE8021162	1.500	-	0.500	0.490	-	1.575	-	0.260	0.165	-16	-9.5	3	-	✓	0.19	G1340	IC0336	8021162	
	PRE8021163	2.000	-	0.750	0.630	-	1.575	-	0.323	0.193	-16	-9.5	4	✓	✓	0.37	G1340	IC0338	8021163	
	PRE8021164	2.000	-	0.750	0.630	-	1.575	-	0.323	0.193	-16	-9.5	5	✓	✓	0.36	G1340	IC0338	8021164	
	PRE8021165	2.500	-	0.750	0.630	-	1.575	-	0.323	0.193	-16	-9.5	4	✓	✓	0.49	G1340	IC0338	8021165	
	PRE8021166	2.500	-	0.750	0.630	-	1.575	-	0.323	0.193	-16	-9.5	6	✓	✓	0.62	G1340	IC0338	8021166	
	PRE8021167	3.000	-	1.000	0.827	-	1.969	-	0.382	0.224	-16	-9.5	5	✓	✓	1.00	G1340	IC0340	8021167	
	PRE8021168	3.000	-	1.000	0.827	-	1.969	-	0.382	0.224	-16	-9.5	7	✓	✓	1.03	G1340	IC0340	8021168	
	PRE8021169	4.000	-	1.500	1.417	-	1.969	-	0.634	0.382	-16	-9.5	6	✓	✓	1.93	G1340	IC0342	8021169	
	PRE8021180	4.000	-	1.500	1.417	-	1.969	-	0.634	0.382	-16	-9.5	8	✓	✓	1.99	G1340	IC0342	8021180	
PRE8021181	5.000	-	1.500	1.417	-	2.480	-	0.634	0.382	-16	-9.5	9	✓	✓	3.51	G1340	IC0390	8021181		

